

PRODUCT
CATALOG
2025/2026



CALIZA COLLECTION



@C03.OFFICIAL_

TABLE OF CONTENTS



INTRODUCTION TO THE COLLECTION	01
OUR VISION	02
OUR DESIGN	03
MATERIALS	04
LOCALLY SOURCED	05
SPACES	06
PRODUCTS	07
CONTACT	08

A CENTER PIECE

The **CALIZA** Collection by **Co3** goes beyond design , it's a **statement of lifestyle.**

Inspired by **the natural transformation of stone**, each piece celebrates the beauty of marble's veins, turning nature's raw character into timeless art.

Every table is **sculptural and architectural**, a unique design that captures the pure beauty of **natural marble** through balanced, **geometric composition**. Each piece reflects harmony between material and form





OUR VISION

The dining space is where life truly happens, where elegance meets intimacy, and memories take form.

CALIZA transforms that space into your personal signature, a reflection of your taste, your identity, and the art of how you choose to live.

Crafted for those who **see their home as a canvas** and design as a way of being.

Every line, every surface, every vein of marble tells a story of **sophistication and emotion.** Because your home deserves more than design, it deserves meaning.

Make your home your masterpiece.

OUR DESIGN

Crafted with Intention

Let your home reflect your unique personality and style

Discover **how ordinary spaces can be transformed into extraordinary spaces** through innovative design concepts and creative solutions.

your signature space, crafted in every table



MODULAR DESIGN

INTERCHANGEABLE TOPS AND BASE

The CALIZA Collection by **CO3** redefines what it means to live with design.

Our tables are fully **customisable**, choose from a curated selection of natural marble tops and architectural steel bases, each **designed to mix, match**, and evolve with your space



Interchangeable Marble Tops

Crafted from premium marbles sourced in Italy and Turkey, each top is unique, showcasing veins and tones shaped by nature.

Thanks to our refined modular system, you can easily swap surfaces, refresh your look, and adapt your table to new moods or interiors, effortlessly.



Sculptural Steel Bases

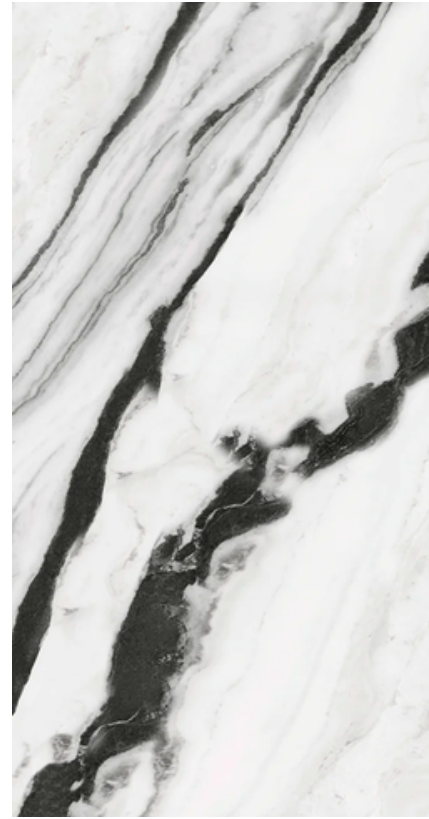
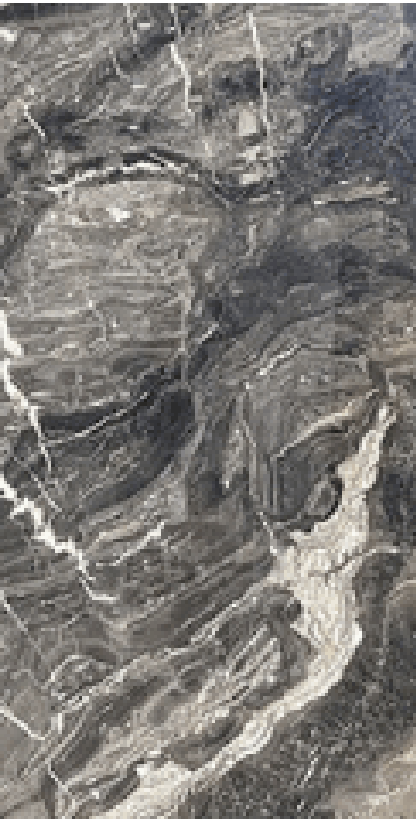
Every base is precisely engineered and powder-coated in a matte finish, offering both balance and timeless style.

Combine your favourite base with any marble top to create a bespoke table, one that reflects your aesthetic, your lifestyle, and your way of living with design.



MATERIALS

Every Co3 table is crafted from
SOLID steel and



Natural marble

Each Co3 table is meticulously crafted with a structural steel base finished in matte powder coating, offering both durability and understated elegance. The surfaces are designed to highlight precision and purity, minimal yet sculptural.

The tabletops are made from carefully selected natural marbles, sourced from Turkey and Italy, chosen for their unique veins, tones, and character.

Every top is interchangeable, allowing you to combine any marble from the CALIZA collection with the base design that best complements your interior.

This modular system gives you the freedom to personalize your table, adapting its look to your evolving space—a timeless blend of craftsmanship, versatility, and contemporary design.

MARBLES AVAILIBLES



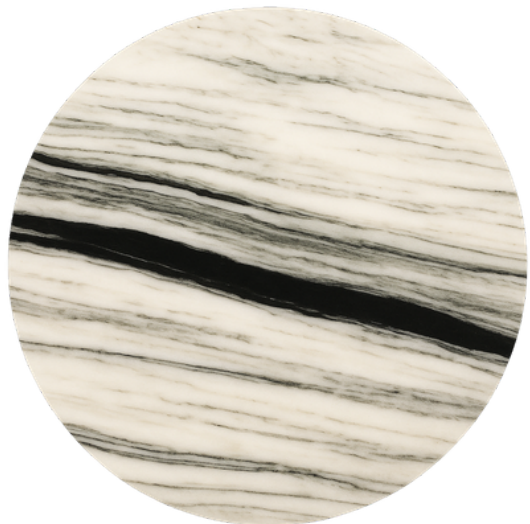
GIORGIO OROBICO

Originating from Italy, Giorgio Orobico is a striking dark marble defined by dramatic waves of charcoal, bronze, and soft grey veining. Its rich tonal depth and dynamic movement evoke the power of natural landscapes, bringing a bold, sculptural presence to any interior. Perfect for creating contrast and visual drama while maintaining timeless elegance.



WHITE BEAUTY

A true statement of refinement, White Beauty marble is celebrated for its fluid interplay of white, grey, and green veins that move gracefully across the surface. Each slab feels like a painted canvas, serene, sophisticated, and full of character. Ideal for interiors seeking a sense of quiet luxury and organic harmony.



PANDA WHITE

Panda White marble combines a crisp white base with bold, graphic black veining, creating a striking modern contrast that feels both minimal and expressive. Its balanced composition makes it a favorite for contemporary spaces, where purity of color meets architectural design. The result: a timeless material that commands attention through simplicity and strength.



Elevate your home and create that dream lifestyle at home. dining areas share moments with family friends/ most important social area

YOUR HOME IS YOUR SIGNATURE





LOCALLY SOURCED

At Co3, we collaborate with local manufacturers in the UAE, partnering with trusted fabricators in Dubai and the Gulf region who share our commitment to precision and craftsmanship.

Our materials are sourced from renowned quarries around the world including Turkey, Greece, Italy, Brazil, and India, each chosen for its exceptional quality, texture, and natural beauty.

Every marble is carefully selected and imported monthly, allowing us to curate a diverse rotation of unique stones that complement the character of each collection. All our materials are 100% natural marbles, ensuring authenticity, durability, and timeless elegance in every piece.

By combining regional production with globally sourced materials, we bring together the best of both worlds, local expertise and international refinement to craft tables that embody Co3's vision of design without boundaries.



REDEFINE YOUR SPACE

Refresh your look anytime, swap tops, change the base, collect finishes, and rotate styles to **Keep your dining space feeling new, dynamic, and uniquely yours.**

For those who see design not as static, but as an evolving expression of life



PRODUCTS



SIDE TABLES

EON

The Eon Side Table is a sculptural piece crafted entirely from natural marble. Its clean geometric design highlights the authenticity of the material, allowing each stone's unique veins, patterns, and natural color variations to become the focal point of the piece.

With a height of 55 cm and a 40 cm diameter top, it is perfectly proportioned to function as a refined side table beside a sofa, lounge chair, or bed.

Each Eon table is available in different natural marbles, making every piece one of a kind.

COLOURS AVAILABLE



- Solid Natural Marble – Durable, high-quality stone construction.
- Unique Veining – Each table has one-of-a-kind natural patterns.
- Compact Size – 55 cm height, 40 cm diameter, ideal for small spaces.
- Versatile Use – Perfect as a side table, accent table, or bedside table.
- Stable Structure – Solid marble base provides strong support.
- Multiple Marble Options – Available in different natural marbles.

SIDE TABLES

LINEAL

The Lineal Side Table features a refined metal base paired with a natural marble top, creating a clean and elegant design defined by simple architectural lines. The natural marble showcases unique veins and patterns, making each piece one of a kind.

With a height of 60 cm and a 40 cm diameter top, it is perfectly sized to function as a side table beside a sofa, lounge chair, or bed.

COLOURS AVAILABLE



- Natural Marble Top – Unique veins and patterns in every piece.
- Metal Base Structure – Strong, stable, and visually light.
- Compact Dimensions – 60 cm height, 40 cm diameter.
- Minimal Linear Design – Clean lines that suit modern interiors.
- Versatile Use – Ideal as a side table, accent table, or bedside table.
- Balanced Structure – Light appearance with solid support.

SIDE TABLES

FORMA

The Forma Side Table is sculpted from solid natural marble, featuring a bold geometric design inspired by the shape of an hourglass. Its structure is formed by intersecting triangular planes that create a striking architectural form.

With a height of 60 cm and a 40 cm diameter top, it is perfectly sized to function as a side table beside a sofa, lounge chair, or bed.

The natural marble reveals unique veins and patterns across the surfaces, making every piece one of a kind. Both functional and sculptural, it works as a refined statement piece in any space.

COLOURS AVAILABLE



- Solid Natural Marble – Crafted entirely from natural stone.
- Geometric Design – Formed by intersecting triangular planes.
- Hourglass-Inspired Shape – Sculptural and architectural presence.
- Compact Dimensions – 60 cm height, 40 cm diameter.
- Unique Natural Veins – Each piece is naturally one of a kind.
- Functional Sculpture – Works as both a side table and design object.

PRODUCTS

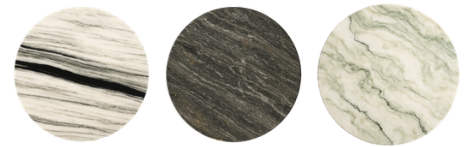
ROUND MARBLE DINING TABLES WITH MODULAR TOPS. SIZES 1200MM/ 1500MM



AXIS

Lorem ipsum dolor sit amet, consectetur adipiscing elit, sed do eiusmod tempor incididunt

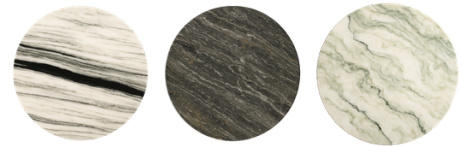
MARBLE OPTION



MONOLITH

Lorem ipsum dolor sit amet, consectetur adipiscing elit, sed do eiusmod tempor incididunt

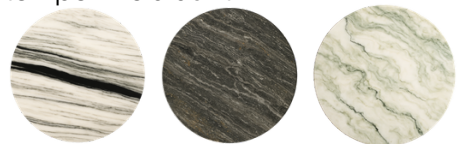
MARBLE OPTION



PRISMA

Lorem ipsum dolor sit amet, consectetur adipiscing elit, sed do eiusmod tempor incididunt

MARBLE OPTION



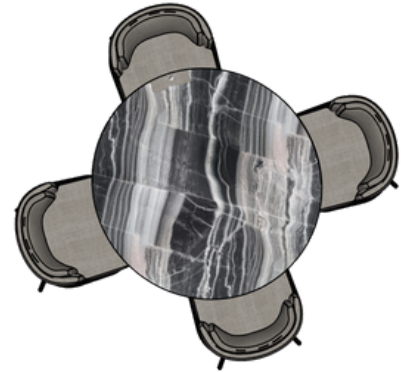
- Polished and modular natural marble top
- Table designed for easy mobility
- Sculptural metal base with architectural geometry
- Highly resistant to heat and humidity
- Minimalist and enduring design

SIZE GUIDE

The CALIZA Collection is offered in two standard diameters , 1200 mm and 1500 mm designed to adapt seamlessly to a range of interior settings.

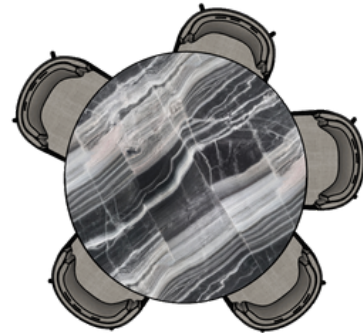
Each size preserves the same elegant proportions and height of 750 mm, ensuring both ergonomic comfort and sculptural harmony.

1200 MM TABLE TOP VIEW



- COMFORTABLY ACCOMMODATES 4 SEATS.

1500 MM TABLE TOP VIEW



- COMFORTABLY ACCOMMODATES 5 SEATS.

Specification	1200 mm Table Top	1500 mm Table Top
Marble thickness	18 mm	18 mm
Metal profile	Four steel plates, laser-cut	Four steel plates, laser-cut
Height	750 mm	750 mm
Width	1200 mm	1500 mm
Depth	1200 mm	1500 mm
Weight	260 lbs	≈ 340 lbs
Style	Modern and ergonomic	Modern and ergonomic
Resistance	Anti-corrosive coating	Anti-corrosive coating
Support capacity	Up to 60 kg	Up to 60 kg



Prisma

DISCOVER THE ART
OF LIVING

PANDA
WHITE



MODULAR
MARBLE TOP



THE PRISMA TABLE IS A STRIKING DINING PIECE THAT COMBINES A ROUND NATURAL MARBLE TOP WITH A BOLD ARCHITECTURAL STEEL BASE. THE SCULPTURAL BASE IS DESIGNED FROM TRIANGULAR METAL SHEETS WITH LINEAR CUT-OUT OPENINGS, INTERSECTING TO CREATE A DYNAMIC GEOMETRIC FORM.



OPCIONES AVAILIBLE



MARBLE/ GORGIO OROBICO



MARBLE/ WHITE BEAUTY



MARBLE/ PANDA WHITE



Axis

DISCOVER THE ART
OF LIVING

WHITE
BEAUTY



MODULAR
MARBLE TOP



THE AXIS TABLE COMBINES A ROUND NATURAL MARBLE TOP WITH A BOLD GEOMETRIC STEEL BASE. ITS SCULPTURAL LINES AND DRAMATIC VEINING CREATE A STATEMENT PIECE THAT MERGES TIMELESS STONE WITH ARCHITECTURAL DESIGN



OPCIONES AVAILIBLE



MARBLE/ GORGIO OROBICO



MARBLE/ WHITE BEAUTY



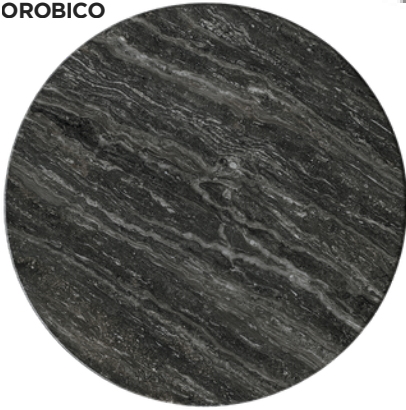
MARBLE/ PANDA WHITE



Monolith

DISCOVER THE ART
OF LIVING

ORGIO
OROBICO



MODULAR
MARBLE TOP



THE PRISMA TABLE IS DEFINED BY ITS MINIMALIST DESIGN , THREE STEEL LEGS IN PERFECT BALANCE SUPPORTING A ROUND MARBLE TOP. ITS CLEAN GEOMETRY FRAMES THE NATURAL STONE WITH ELEGANCE, TURNING SIMPLICITY INTO A STATEMENT OF TIMELESS SOPHISTICATION



OPCIONES AVAILIBLE



MARBLE/ GORGIO OROBICO



MARBLE/ WHITE BEAUTY



MARBLE/ PANDA WHITE

CALIZA
COLLECTION
PRODUCT
CATALOGUE
2025/2026

FOLLOW US ON SOCIALS

@C03.OFFICIAL_

